

Agency Overview

# EAST WELLINGTON COMMUNITY SERVICES





# Agency Overview

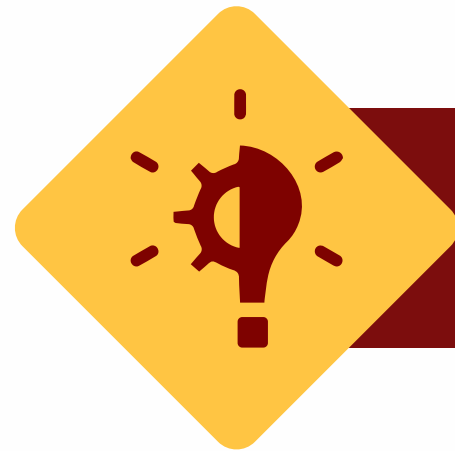
EWCS offers a diverse range of programs and services, tailored to meet the needs of our community, including senior's programs, door-to-door accessible transportation, hunger relief initiatives, outreach support services, and engaging youth programs.



**East Wellington  
Community Services**

HELP LOCALLY – GIVE LOCALLY

# Vision And Mission



## Our Vision

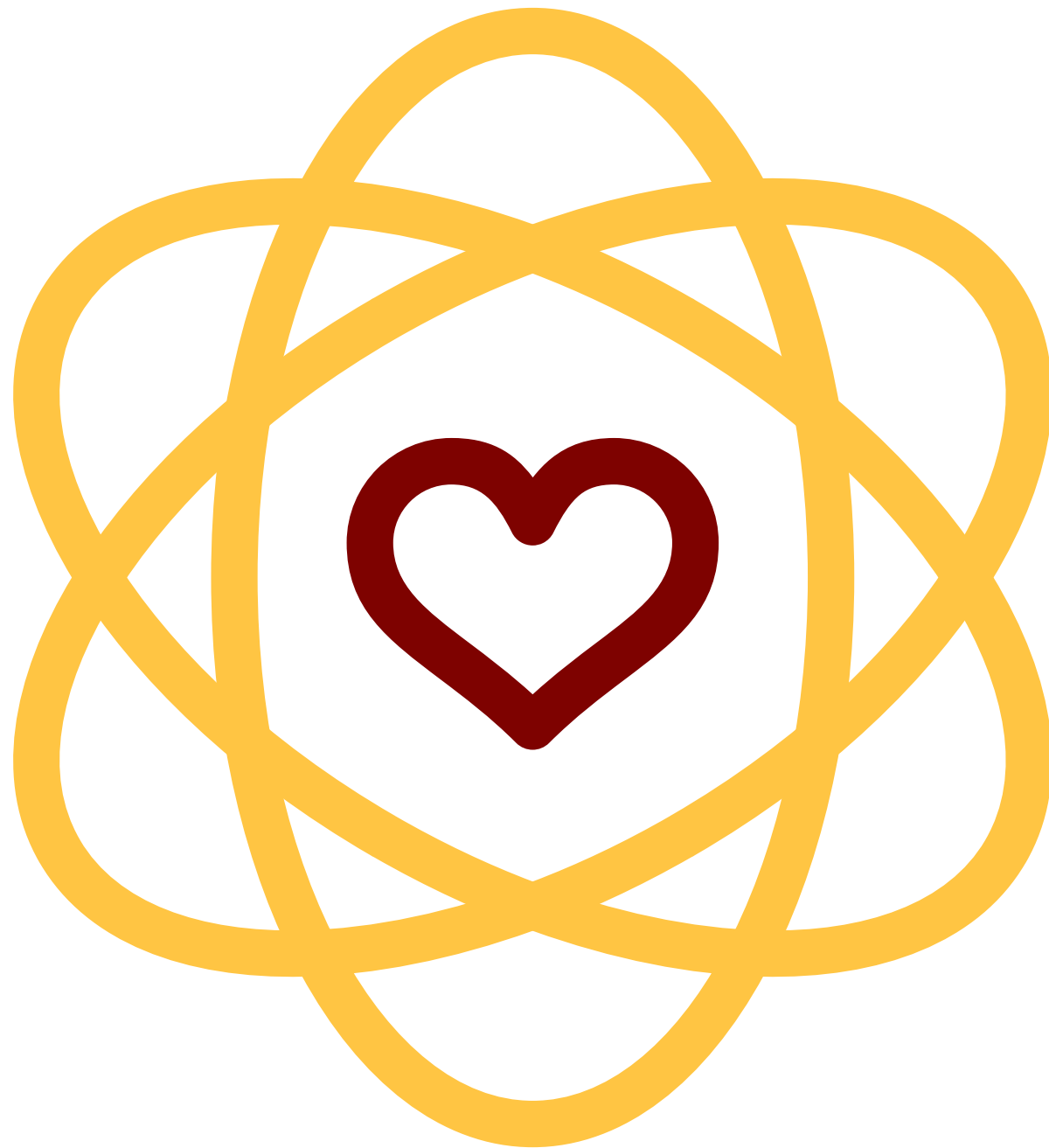
A vibrant and healthy community where people choose to live and are able to stay



## Our Mission

To strengthen our community through support services and advocacy

# Our Values



## **RESPECT**

We respect the diversity of the community



## **LEADERSHIP**

We commit to innovative programs and services



## **RESPONSIVENESS**

We respond to the needs of the community



## **INTEGRITY**

We act, responsibly, ethically, and professionally



# PROGRAMS & SERVICES

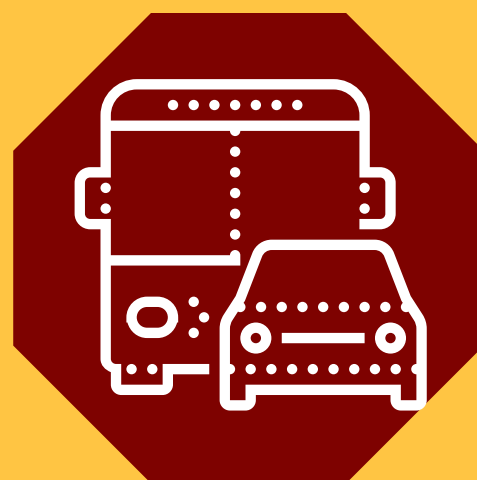
East Wellington Community Services is a multi-service, registered charity serving the Town of Erin and Township of Guelph/Eramosa communities.



**VOLUNTEERS**



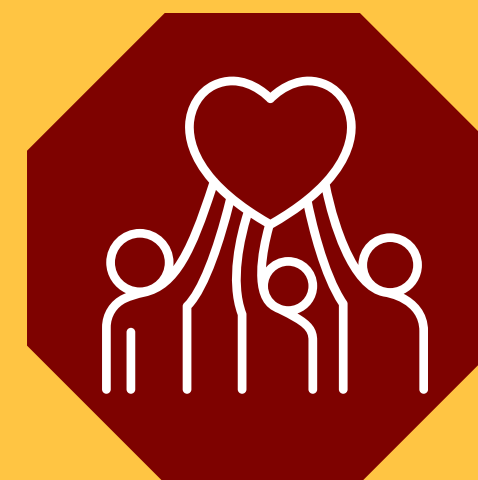
**FOOD BANK**



**TRANSPORTATION  
SERVICE**



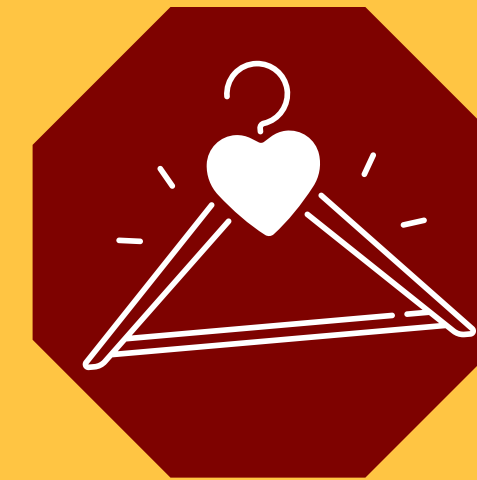
**OLDER ADULT  
PROGRAM**



**COMMUNITY  
OUTREACH**



**YOUTH  
PROGRAM**



**THRIFT  
STORES**

# FOOD BANK

We operate two food banks, located in Erin and Rockwood which provide food support throughout the year.

EWCS provides short-term food support to families and individuals in need.

In the long term, we are striving to discover and implement solutions to reduce hunger in East Wellington



## SERVICES OFFERED

### Fresh Food Prescription Program

Doctors and healthcare practitioners (dietitians, social workers) prescribe fresh food to community members who are food insecure and need it for their health. Clients redeem the prescription for fresh food which is sourced through the Seed.

### Monthly Food Hamper

Clients receive a monthly food hamper with one week's worth of groceries.

### Backpack Program

Backpacks containing school supplies are distributed to families in need.

### Holiday Hamper

Clients receive a hamper filled with a festive meal, fresh produce, holiday treats and gift cards to purchase food and a gift for themselves or loved ones.



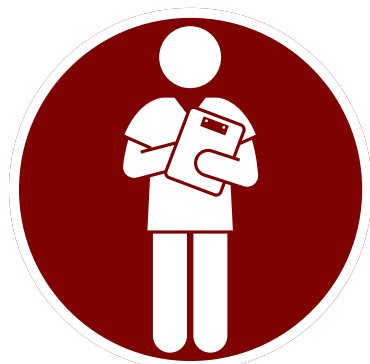
# Older Adult Program

EWCS offers an Adult Day Program and the Community Personal Support Worker Program. These programs are designed to meet the physical, cognitive, social, medical and mental health needs of older adults in our community, while offering respite for caregivers



## Adult Day Program

Offers a warm, welcoming place for older adults to socialize, engage in innovative and stimulating activities, and enjoy a nutritious daily meal and snacks.



## Community Personal Support Worker

Provides direct personal home care to clients by helping them before and during their day at the program, and at other times during the week.





# COMMUNITY OUTREACH

We offer personalized support for addiction, mental health, housing, and other life challenges. Our tailored approach ensures that each person receives the care and resources they need to thrive.

We work closely with community members to understand their specific needs and circumstances, and we tailor an individual care plan to provide the support and resources they need to thrive.



**Income Tax Program**



**Rent Subsidy Program**



**System Navigation**





# YOUTH PROGRAMMING

The Grove Main Place Erin



## Mental Health

Youth have access to intake and outreach workers who work with youth to identify their goals in their overall wellness as well as access to clinicians for one to one counseling.



## Community and Social Supports

Our team supports youth in navigating housing, employment and educational challenges through our service partners and partnership with local school boards



## Skills and Wellbeing

Youth are provided the opportunity to explore the arts, cooking/ baking, join the book club, meet our therapy dogs and so much more. Through our community partners youth are learning new skills, trying something new and building confidence.







# TRANSPORTATION PROGRAM

We offer friendly, reliable, door-to-door accessible transportation services from Monday to Friday to and from appointments within East Wellington and surrounding areas.

Transportation services are provided by either a wheelchair accessible van or bus, a passenger van, or by car in the company of one of our friendly and dedicated volunteer drivers.



# Volunteer Program

Volunteers are the heart of EWCS. Each year, over 100 dedicated individuals contribute thousands of hours to support our programs and services and give their time to the community.



**Food Bank Volunteers –** assist with sorting, stocking, and client support



**ADP Support/ Bus Assistants–** help with activities, meals, and client engagement



**Volunteers Driver–** driving clients to medical and essential appointments



**Front Desk Volunteers –** greet visitors, answer phones, and provide information



**Fundraising Event Volunteers –** support special events like fundraisers and community drives

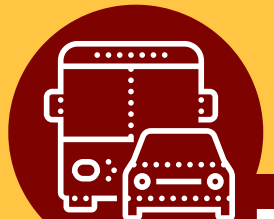


# PROGRAM STATISTICS



## Older Adult Program

2150 Visits to the program / 729 In-home personal support worker visits



## Transportation Program

3037 rides provided to individuals



## Youth Services

2261 Visits by youth to the Centre



## Food Bank

Served 238 individuals at our Food Banks with 1/3 clients being children.



## Community Outreach

185 Youth individuals served



## Volunteer Program

111 Amazing volunteers, contributing 7100 hours



# NEW TO YOU STORE

You can find fabulous, affordable, gently used brand name clothing, bags, accessories and more! 100% of all proceeds from our stores go back into our programs and services



# BOOKENDS STORE

Located both in Erin and Rockwood offering used books and stores are operated entirely by volunteers!





# Fundraising Events

## Fueling Our Mission



### Coldest Night of the Year

- National winter walk, held every February in support of people experiencing hurt, hunger, and homelessness
- Brings together families, friends, and local businesses
- A growing success for both our agency and the community for 2 years!
- Community impact: raised over \$70,000 in 2025



### Annual Golf Tournament

- Held every July – 2025 marks our 22nd year!
- Hosted at Guelph Lakes Golf & Country Club
- Packed with excitement: mulligans, contests, prizes, and a lively silent & live auction
- Raised \$19,500 last year to support EWCS programs
- A day of sunshine, generosity, and community spirit — all for a great cause!