

Parks, Recreation and Trails Advisory Committee Update



2024 Review & 2025 Priorities



Patrick D'Almada, MPA

Retired
Director of Parks,
Recreation and Culture

Introduction

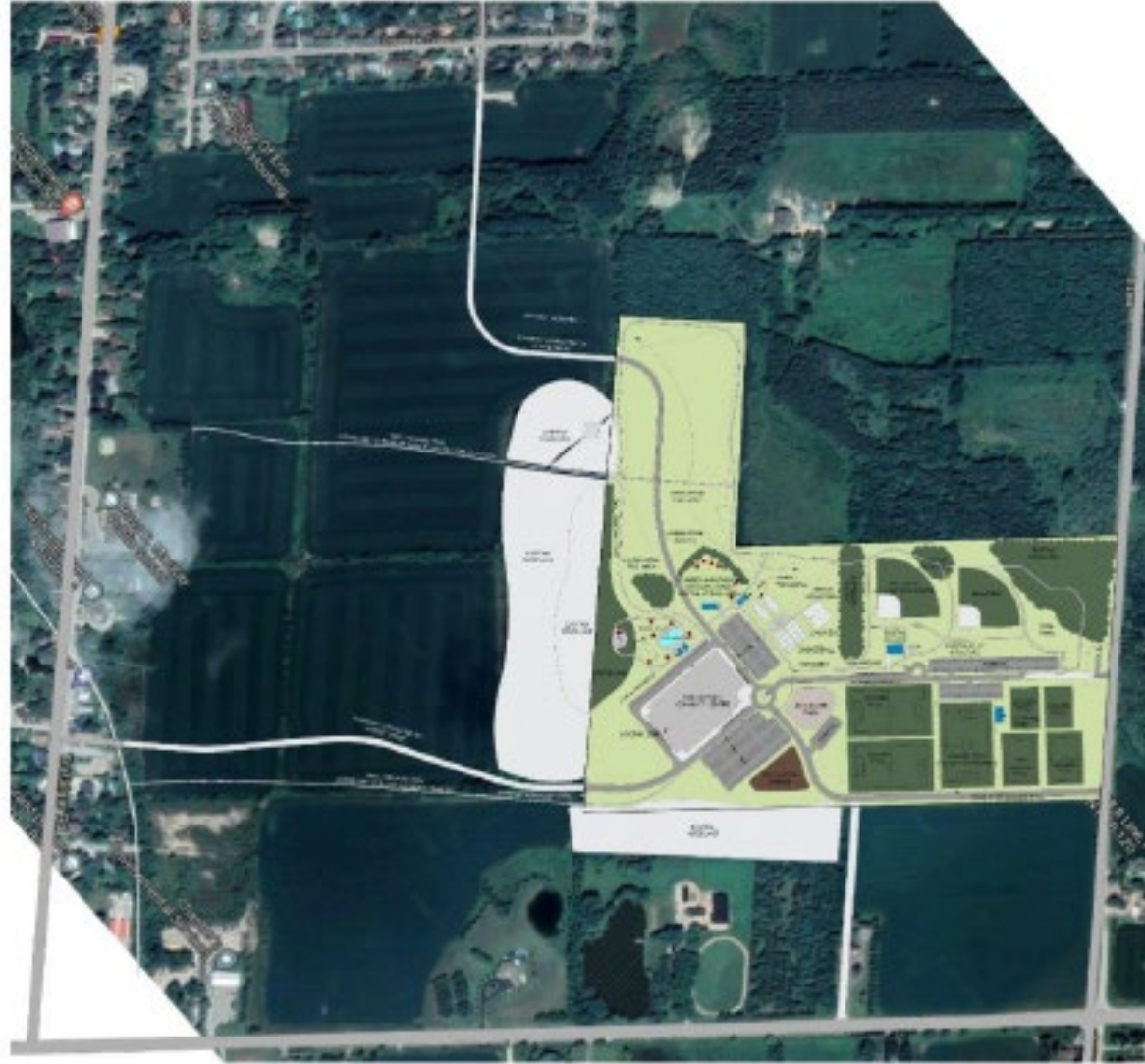


Life Member, Royal
Lifesaving Society
Commonwealth
Queen Elizabeth, II,
Buckingham Palace

Multi-use Facility Feasibility Study - Erin



Multi-use Facility Feasibility Study - Erin



Setting the context

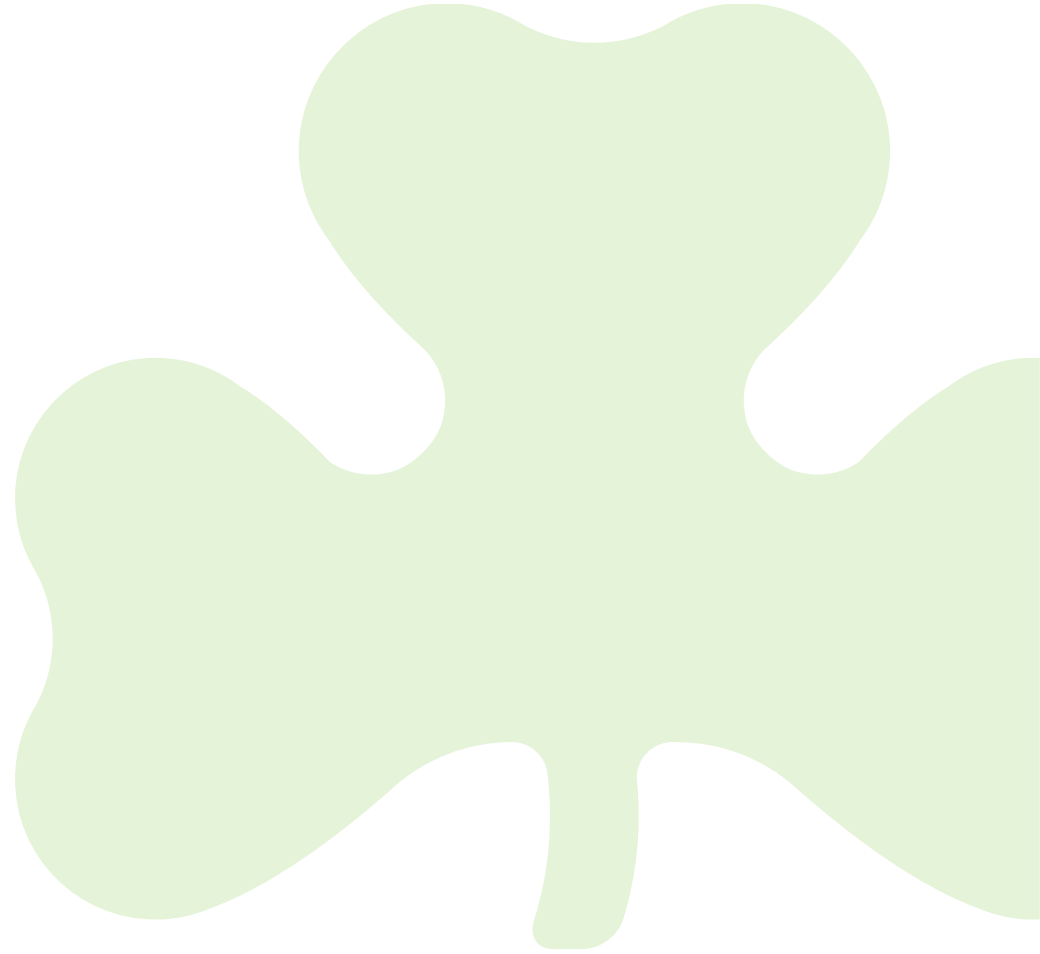
- Committee was initially unfocused and lacked clear priorities.
- Staff indicated that if the committee was to function, we needed to take initiative.
- Community groups voiced concerns about the state of facilities and Town processes.

Committee Membership

- Recruited representatives from local community groups.
- Currently 10 dedicated volunteers + 1 alternate.
- Councillor Ryan has been a champion and strong asset
- Vice Chair Rob has also been a strong advocate for trails
- Receiving excellent support from new staff leadership.

Committee Membership

- Councillor Bridget Ryan
- Chair Patrick D'Almada
- Vice-Chair Rob Smith
- David DeForest
- Justyna Toeppner
- Val Bush
- Sidney Spear
- Bayne Upton
- Gissel Gonzalez
- Tea Baxtrom
- Alternate: Margaret Law



Foundation Building

- Conducted a comprehensive SWOT analysis.
- Priorities were identified and clarified through this process.
- Subcommittee structure established to help address operational issues.



Leadership Transitions

- Changes to Director of Infrastructure position.
- Acting CAO (Fire Chief) was a strong supporter in moving PRTAC forward
- New CAO and Director of Community Services hired.
- Positive shift in staff support and alignment with council.

Committee Activities

Delegations to the Committee:

- Credit Valley Conservation Authority
- Erin Chapter of the Tree Trust
- County of Wellington (Erin Grist Mill Library and Trails)
- Hillsburgh Snow Roamers
- VIMA 360
- Elora Cataract Trailway Association
- Hillsburgh Community Strides
- Erin Tennis Club



Key Accomplishments

- Re-established the role and focus of the committee.
- Engaged in ongoing dialogue with local organizations.
- Supported community-driven concerns around parks, trails, and fields.
- Initiated trail mapping conversations, parks and facility assessments.
- Earth Day Support from Committee in collaboration with Rotary
- Tree Planting Participation (CVC & Rotary).



2025 Priorities

- Continue developing a clearly defined role and purpose for the committee.
- Provide input into future parks, trails and recreation facility developments.
- Contribute to the community consultation process.
- Advise on policies supporting recreational growth and sustainability.
- Tree Planting Event and Tree Trust Event.



Trails & Connectivity Focus

- Trail mapping, access, and ownership review.
- Agreements with landowners and partners.
- Focus on the reinstatement of Elora-Cataract Trail section (Hillsburgh to Erin).
- Plan to invite delegations from partners and stakeholders to collaborate.



Collaboration & Commitment

- Emphasis on transparent, community-first decision-making.
- Strengthening partnerships with staff, council, and regional bodies.
- Continued commitment from volunteer members.

Thank You

- Thank you for your continued support and partnership.
- We welcome ongoing dialogue with Council and the community to ensure parks, recreation, and trails meet current and future community needs.

Thank You

Questions?