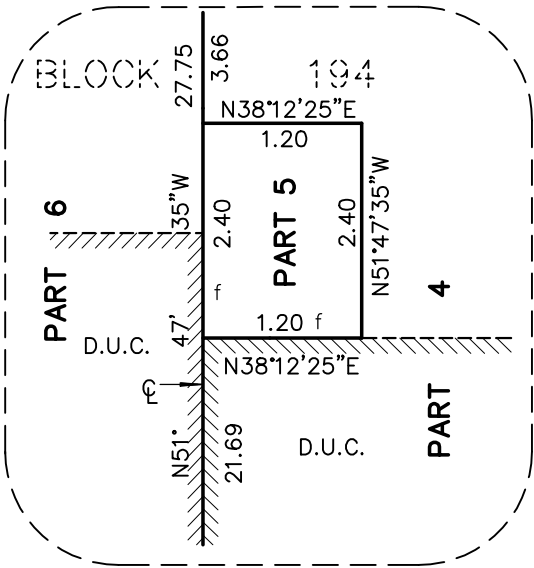


PLAN OF SURVEY OF
BLOCKS 194, 195, 196 AND 197
PLAN 61M-261
TOWN OF ERIN
COUNTY OF WELLINGTON



R-PE SURVEYING LTD., O.L.S.
THE INTENDED PLOT SIZE OF THIS PLAN IS 782 mm IN WIDTH BY
382 mm IN HEIGHT WHEN PLOTTED AT A SCALE OF 1:200.

METRIC
DISTANCES AND COORDINATES SHOWN ON THIS PLAN ARE IN
METRES AND CAN BE CONVERTED TO FEET BY DIVIDING BY 0.3048.

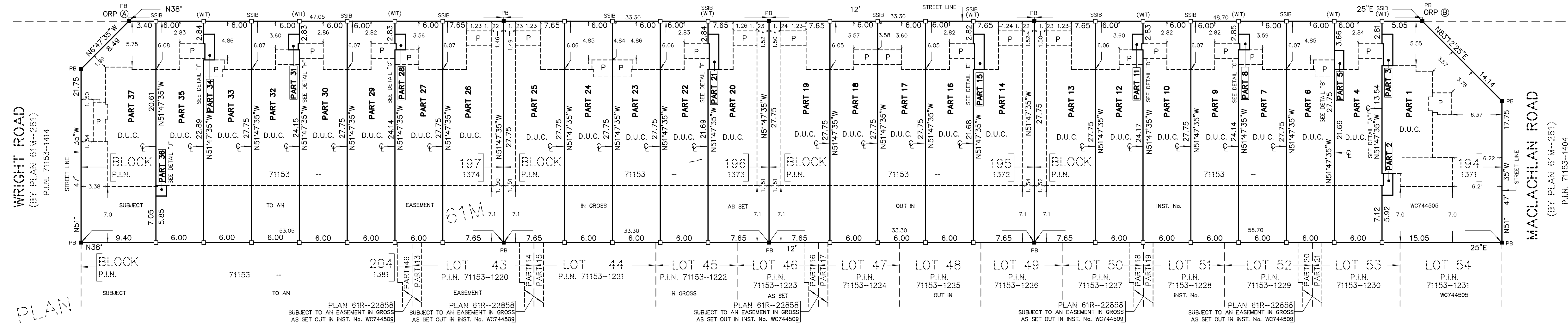


DETAIL "B"
(NOT TO SCALE)

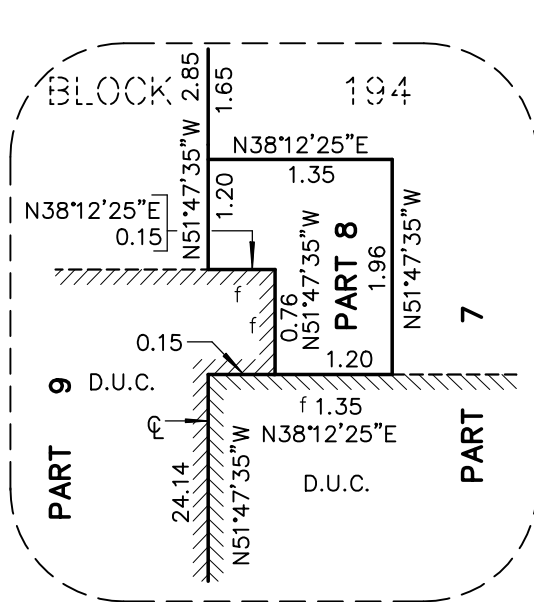
GEAR

(BY PLAN 61M-261)
P.I.N. 71153-1407

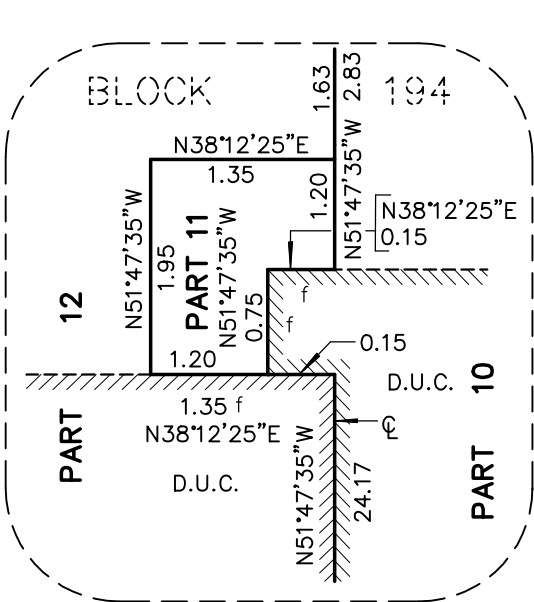
AVENUE



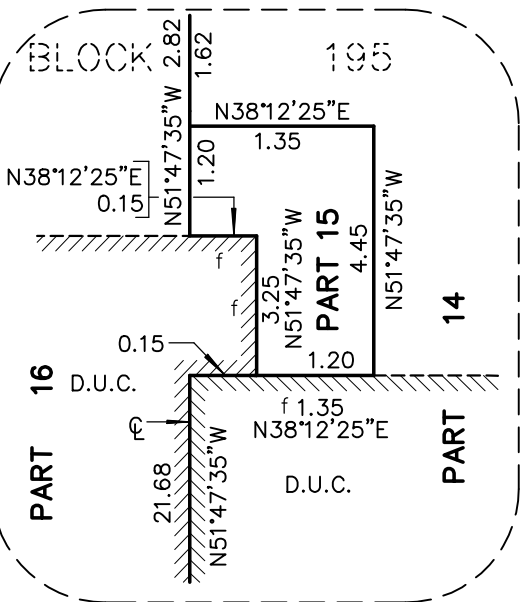
PLAN



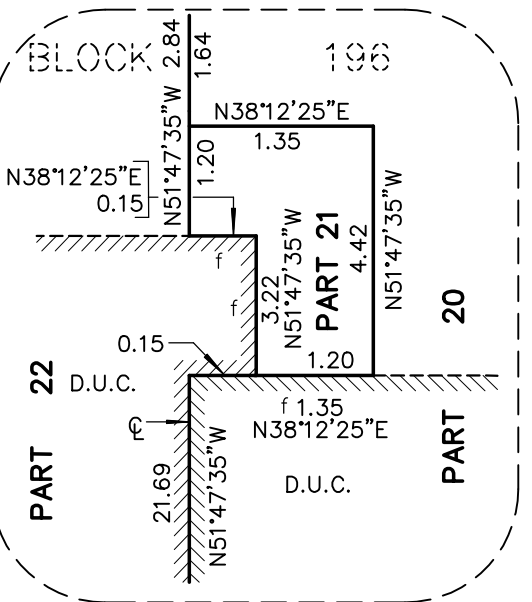
DETAIL "C"
(NOT TO SCALE)



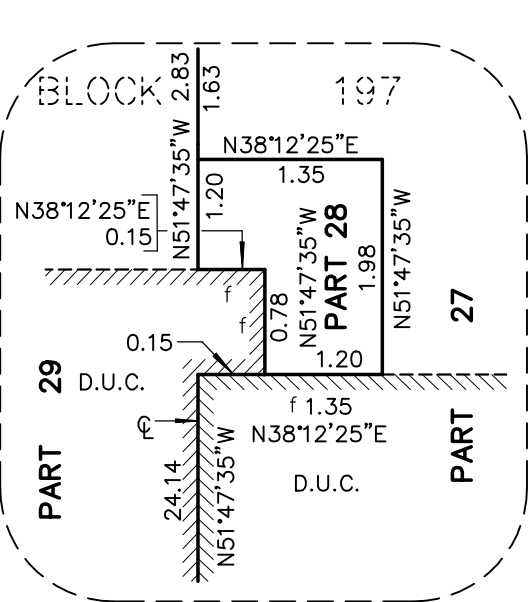
DETAIL "D"
(NOT TO SCALE)



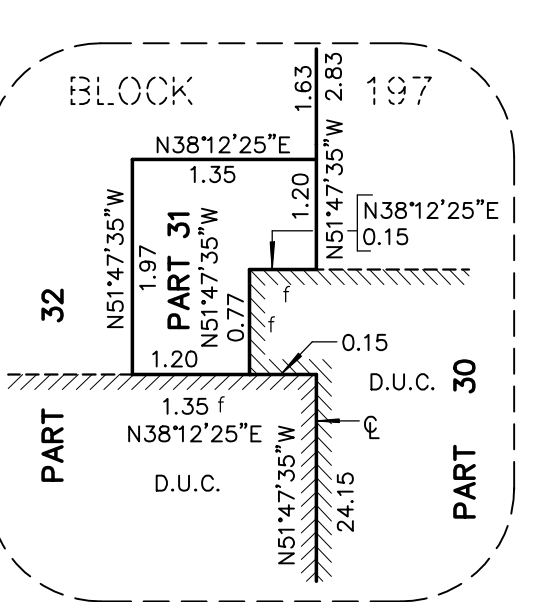
DETAIL "E"
(NOT TO SCALE)



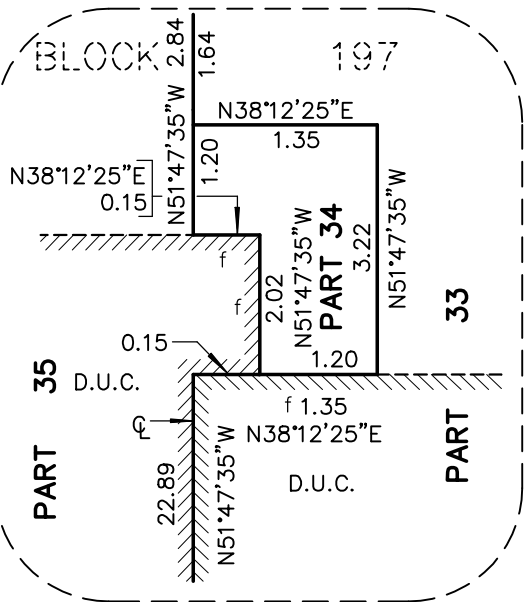
DETAIL "F"
(NOT TO SCALE)



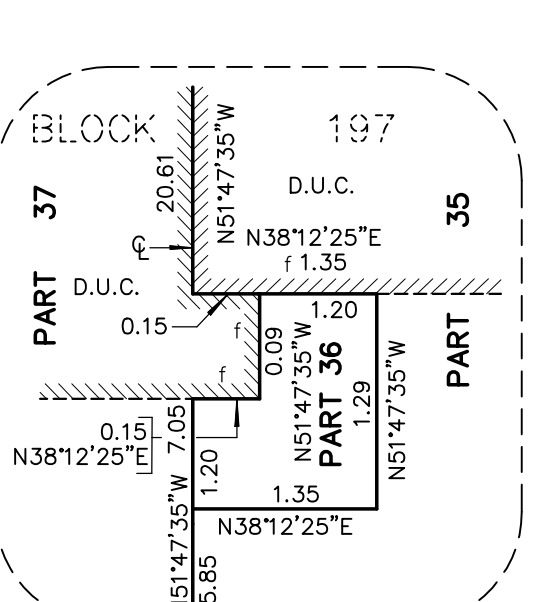
DETAIL "G"
(NOT TO SCALE)



DETAIL "H"
(NOT TO SCALE)



DETAIL "I"
(NOT TO SCALE)



DETAIL "J"
(NOT TO SCALE)

rpe

R-PE SURVEYING LTD.
ONTARIO LAND SURVEYORS
643 Chrislea Road, Suite 7
Woodbridge, Ontario L4L 8A3
Tel.(416)635-5000 Fax (416)635-5001
Tel.(905)264-0881 Fax (905)264-2099
Website: www.r-pe.ca
DRAWN: V.K. CHECKED: I.A.A.
JOB No. 24-110 CAD FILE No. 24-110R13

NOTES

- DENOTES MONUMENT FOUND
- DENOTES MONUMENT SET
- PB DENOTES PLASTIC BAR
- SSIB DENOTES SHORT STANDARD IRON BAR
- P.I.N. DENOTES PROPERTY IDENTIFIER NUMBER
- D.U.C. DENOTES DWELLING UNDER CONSTRUCTION
- ⌒ DENOTES PORCH
- ⌒ DENOTES CENTRELINE OF WALL
- (WIT) DENOTES WITNESS
- f DENOTES FACE OF WALL
- ORP DENOTES OBSERVED REFERENCE POINT

ALL FOUND MONUMENTS BY R-PE SURVEYING LTD., O.L.S.
ALL SET MONUMENTS ARE IRON BARS UNLESS NOTED OTHERWISE.
ALL TIES TO CONCRETE FOUNDATION.

INTEGRATION NOTE

BEARINGS ARE GRID, UTM, NAD83 (CSRS:CBNV6:2010.0), DERIVED FROM
OBSERVED REFERENCE POINTS (A) AND (B) USING CANNET REAL TIME
NETWORK (RTN) No. 20120110037 (NORTHING: 4860917.470, EASTING:
571296.238).

COORDINATES ARE UTM, ZONE 17, NAD83 (CSRS:CBNV6:2010.0), TO
URBAN ACCURACY PER SEC. 14 (2) OF O.REG. 216/10, AND CANNOT,
IN THEMSELVES, BE USED TO RE-ESTABLISH CORNERS OR BOUNDARIES
SHOWN ON THIS PLAN.

POINT	NORTHING	EASTING
ORP (A)	4848506.69	574912.29
ORP (B)	4848634.27	575012.71

DISTANCES ARE GROUND AND CAN BE CONVERTED TO GRID BY
MULTIPLYING BY THE COMBINED SCALE FACTOR OF 0.999612.

SURVEYOR'S CERTIFICATE

I CERTIFY THAT:

- THIS SURVEY AND PLAN ARE CORRECT AND IN ACCORDANCE WITH THE
SURVEYS ACT, THE SURVEYORS ACT AND THE LAND TITLES ACT AND
THE REGULATIONS MADE UNDER THEM.
- THE SURVEY WAS COMPLETED ON THE 25th DAY OF NOVEMBER, 2024

DATE FEBRUARY 28, 2025

I. A. ABRAHAM
ONTARIO LAND SURVEYOR

THIS PLAN OF SURVEY RELATES TO AOLS
PLAN SUBMISSION FORM NUMBER V-98638.

PLAN 61R-22965

Received and deposited

March 3rd, 2025

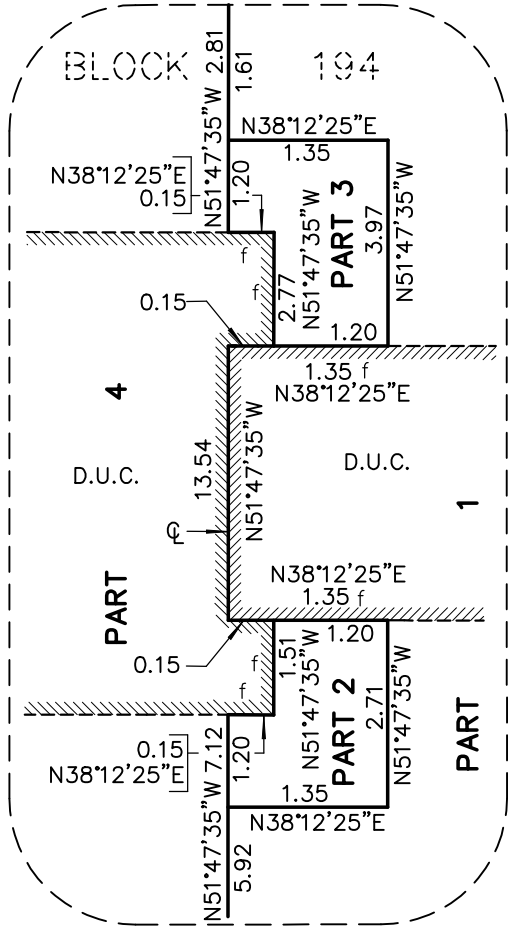
Tracy Burke

Representative for the
Land Registrar for the
Land Titles Division of
Wellington (No.61)

SCHEDULE

PART(S)	ALL OF BLOCK	PLAN	ALL OF P.I.N.
1 TO 13, INCLUSIVE	194	61M-261	71153-1371
14 TO 19, INCLUSIVE	195		71153-1372
20 TO 25, INCLUSIVE	196		71153-1373
26 TO 37, INCLUSIVE	197		71153-1374

PARTS 1 TO 37, INCLUSIVE ARE SUBJECT TO AN
EASEMENT IN GROSS AS SET OUT IN
INST. No. WC744505



DETAIL "A"
(NOT TO SCALE)