

Appendix A

PLAN OF SUBDIVISION OF
PART OF LOTS 16 AND 17
CONCESSION 10
(GEOGRAPHIC TOWNSHIP OF ERIN)
TOWN OF ERIN
COUNTY OF WELLINGTON

SCALE 1:1000

R.P. SHARPING LTD., O.L.S.

METRES AND COORDINATES SHOWN ON THIS PLAN ARE IN METRES AND
CAN BE CONVERTED TO FEET BY DIVIDING BY 0.3048

NOTES

1. CONVEYANCE OF THE LAND SHOWN ON THIS PLAN IS BY DEED.
2. THE LAND SHOWN ON THIS PLAN IS THE PROPERTY OF R.P. SHARPING LTD., O.L.S.
3. THE LAND SHOWN ON THIS PLAN IS THE PROPERTY OF R.P. SHARPING LTD., O.L.S.
4. THE LAND SHOWN ON THIS PLAN IS THE PROPERTY OF R.P. SHARPING LTD., O.L.S.
5. THE LAND SHOWN ON THIS PLAN IS THE PROPERTY OF R.P. SHARPING LTD., O.L.S.
6. THE LAND SHOWN ON THIS PLAN IS THE PROPERTY OF R.P. SHARPING LTD., O.L.S.
7. THE LAND SHOWN ON THIS PLAN IS THE PROPERTY OF R.P. SHARPING LTD., O.L.S.
8. THE LAND SHOWN ON THIS PLAN IS THE PROPERTY OF R.P. SHARPING LTD., O.L.S.
9. THE LAND SHOWN ON THIS PLAN IS THE PROPERTY OF R.P. SHARPING LTD., O.L.S.
10. THE LAND SHOWN ON THIS PLAN IS THE PROPERTY OF R.P. SHARPING LTD., O.L.S.

INTEGRATION NOTE

THE LAND SHOWN ON THIS PLAN IS THE PROPERTY OF R.P. SHARPING LTD., O.L.S. AND IS INTEGRATED WITH THE LAND SHOWN ON THE PLAN OF SUBDIVISION OF PART OF LOTS 16 AND 17 CONCESSION 10 (GEOGRAPHIC TOWNSHIP OF ERIN) TOWN OF ERIN COUNTY OF WELLINGTON.

ROTATION NOTE

THE LAND SHOWN ON THIS PLAN IS THE PROPERTY OF R.P. SHARPING LTD., O.L.S. AND IS ROTATED TO THE ANGLE OF 0.001 DEGREES.

SURVEYOR'S CERTIFICATE

I, R.P. SHARPING LTD., O.L.S., DO HEREBY CERTIFY THAT THE SURVEY HAS BEEN MADE IN ACCORDANCE WITH THE SURVEY ACT AND THE LAND SHOWN ON THIS PLAN IS THE PROPERTY OF R.P. SHARPING LTD., O.L.S.

OWNER'S CERTIFICATE

I, R.P. SHARPING LTD., O.L.S., DO HEREBY CERTIFY THAT THE LAND SHOWN ON THIS PLAN IS THE PROPERTY OF R.P. SHARPING LTD., O.L.S. AND IS THE PROPERTY OF R.P. SHARPING LTD., O.L.S.

NATIONAL PROPERTIES INC.

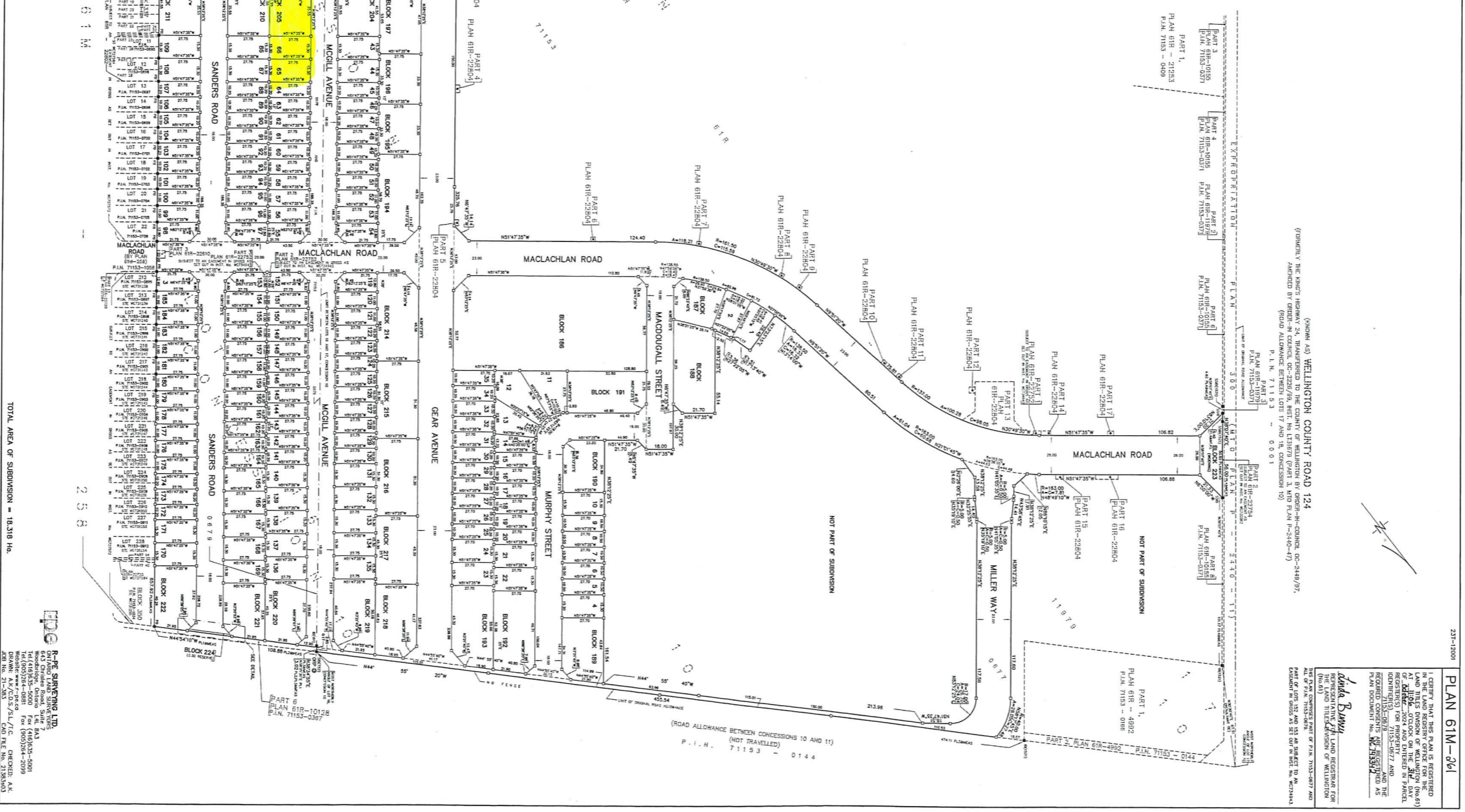
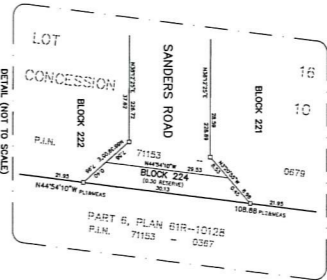
DATED THE 1ST DAY OF OCTOBER, 2024

I HAVE THE AUTHORITY TO SIGN THE CORPORATION
AUTHORISED SIGNING OFFICER
NATIONAL PROPERTIES INC.

MUNICIPAL APPROVAL

APPROVED UNDER SECTION 51 (2) OF THE PLANNING ACT, R.S.O. 1990
AS AMENDED BY THE CORPORATION OF THE COUNTY OF WELLINGTON
THE 16TH DAY OF OCTOBER, 2024

AND I HAVE THE AUTHORITY TO SIGN THE CORPORATION
DIRECTOR OF PLANNING AND DEVELOPMENT



R.P. SHARPING LTD.
1410 BAYVIEW AVE. SUITE 100
SCARBOROUGH, ONTARIO M1S 5H5
TEL: (416) 291-1000 FAX: (416) 291-1001
WWW.RP-SHARPING.COM