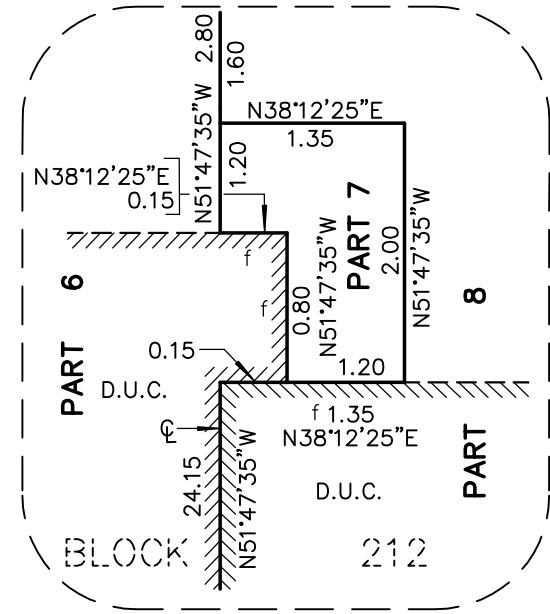


PLAN OF SURVEY OF  
LOTS 110, 111 AND BLOCK 212  
PLAN 61M-261  
TOWN OF ERIN  
COUNTY OF WELLINGTON

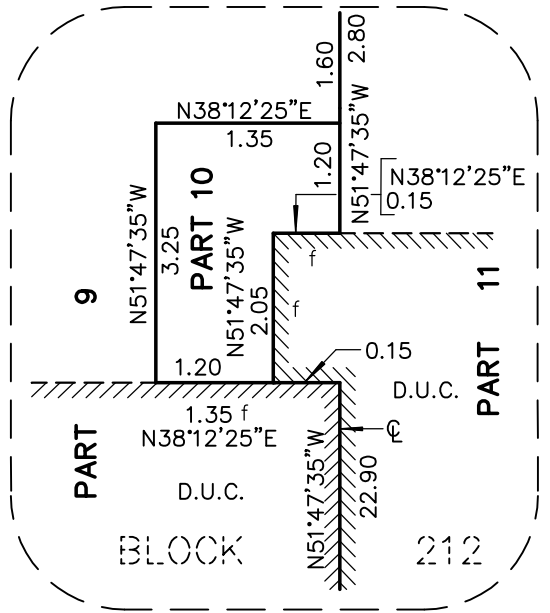


R-PE SURVEYING LTD., O.L.S.  
THE INTENDED PLOT SIZE OF THIS PLAN IS 711 mm IN WIDTH BY  
353 mm IN HEIGHT WHEN PLOTTED AT A SCALE OF 1:200.

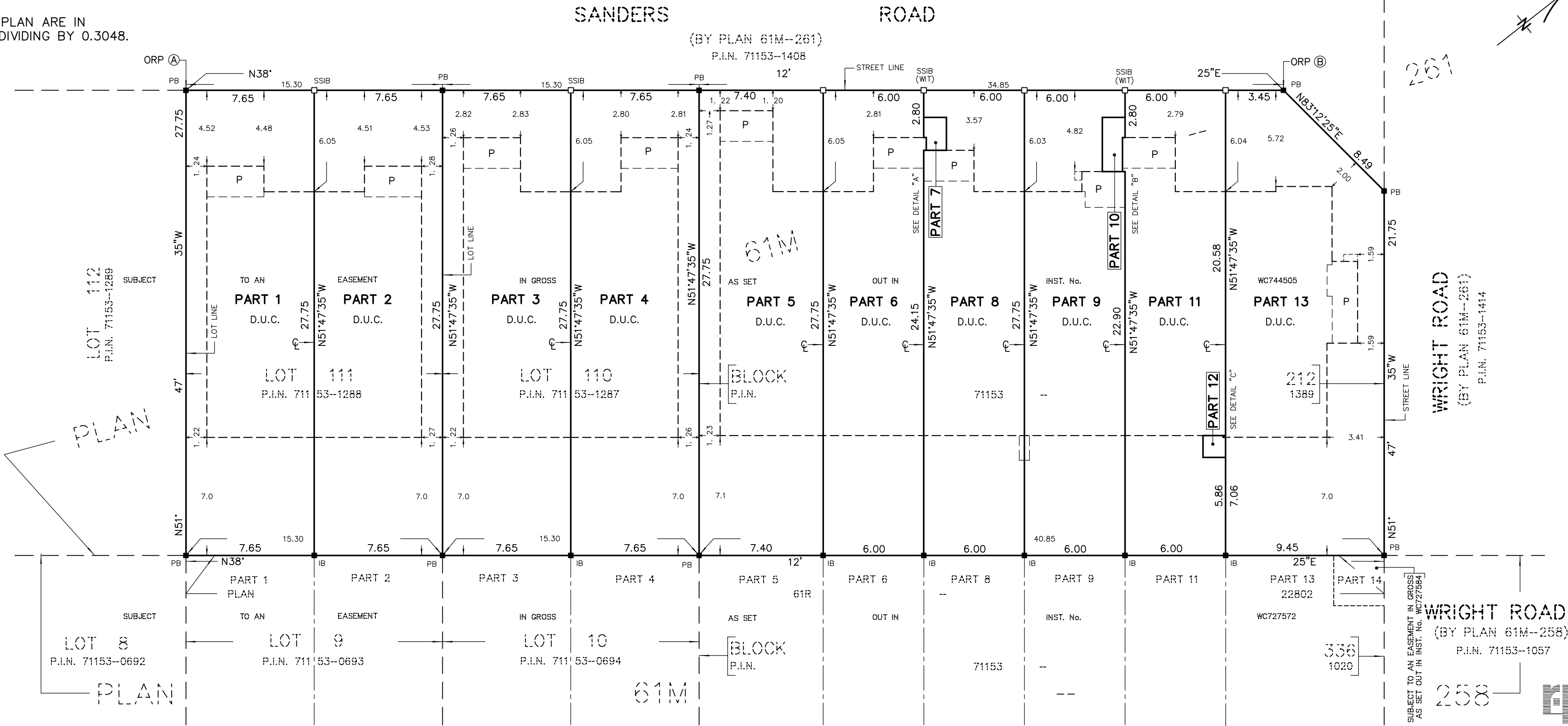
**METRIC**  
DISTANCES AND COORDINATES SHOWN ON THIS PLAN ARE IN  
METRES AND CAN BE CONVERTED TO FEET BY DIVIDING BY 0.3048.



DETAIL "A"  
(NOT TO SCALE)



DETAIL "B"  
(NOT TO SCALE)



NOTES

- DENOTES MONUMENT FOUND
- DENOTES MONUMENT SET
- IB DENOTES IRON BAR
- PB DENOTES PLASTIC BAR
- SSIB DENOTES SHORT STANDARD IRON BAR
- P.I.N. DENOTES PROPERTY IDENTIFIER NUMBER
- D.U.C. DENOTES DWELLING UNDER CONSTRUCTION
- P DENOTES PORCH
- ☉ DENOTES CENTRELINE OF WALL
- (WIT) DENOTES WITNESS
- f DENOTES FACE OF WALL
- ORP DENOTES OBSERVED REFERENCE POINT

ALL FOUND MONUMENTS BY R-PE SURVEYING LTD., O.L.S.  
ALL SET MONUMENTS ARE IRON BARS UNLESS NOTED OTHERWISE.  
ALL TIES TO CONCRETE FOUNDATION.

INTEGRATION NOTE

BEARINGS ARE GRID, UTM, NAD83 (CSRS:CBNV6:2010.0), DERIVED FROM  
OBSERVED REFERENCE POINTS (A) AND (B) USING CANNET REAL TIME  
NETWORK (RTN) No. 20120110037 (NORTHING: 4860917.470, EASTING:  
571296.238).

COORDINATES ARE UTM ZONE 17, NAD83 (CSRS:CBNV6:2010.0), TO  
URBAN ACCURACY PER SEC. 14 (2) OF O.REG. 216/10, AND CANNOT,  
IN THEMSELVES, BE USED TO RE-ESTABLISH CORNERS OR BOUNDARIES  
SHOWN ON THIS PLAN.

POINT	NORTHING	EASTING
ORP (A)	4848340.77	574968.77
ORP (B)	4848392.20	575009.25

DISTANCES ARE GROUND AND CAN BE CONVERTED TO GRID BY  
MULTIPLYING BY THE COMBINED SCALE FACTOR OF 0.999612.

SURVEYOR'S CERTIFICATE

I CERTIFY THAT:

- THIS SURVEY AND PLAN ARE CORRECT AND IN ACCORDANCE WITH THE  
SURVEYS ACT, THE SURVEYORS ACT AND THE LAND TITLES ACT AND  
THE REGULATIONS MADE UNDER THEM.
- THE SURVEY WAS COMPLETED ON THE 8<sup>th</sup> DAY OF AUGUST, 2024

DATE DECEMBER 9, 2024

I. A. ABRAHAM  
ONTARIO LAND SURVEYOR

THIS PLAN OF SURVEY RELATES TO AOLS  
PLAN SUBMISSION FORM NUMBER V-91546.

PLAN 61R-22892

Received and deposited

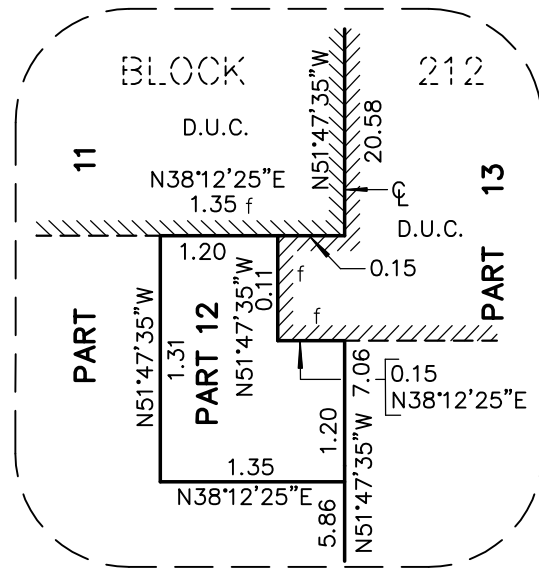
December 20<sup>th</sup>, 2024

Elizabeth Borrow

Representative for the  
Land Registrar for the  
Land Titles Division of  
Wellington (No.61)

SCHEDULE			
PART(S)	ALL OF BLOCK/LOT	PLAN	ALL OF P.I.N.
1 & 2	LOT 111	61M-261	71153-1288
3 & 4	LOT 110		71153-1287
5 TO 13, INCLUSIVE	BLOCK 212		71153-1389

PARTS 1 TO 13, INCLUSIVE ARE SUBJECT TO AN  
EASEMENT IN GROSS AS SET OUT IN  
INST. No. WC744505



DETAIL "C"  
(NOT TO SCALE)



**R-PE SURVEYING LTD.**  
ONTARIO LAND SURVEYORS  
643 Chrislea Road, Suite 7  
Woodbridge, Ontario L4L 8A3  
Tel.(416)635-5000 Fax (416)635-5001  
Tel.(905)264-0881 Fax (905)264-2099  
Website: www.r-pe.ca  
DRAWN: V.K. CHECKED: I.A.A./T.S.  
JOB No. 24-110 CAD FILE No. 24-110R02