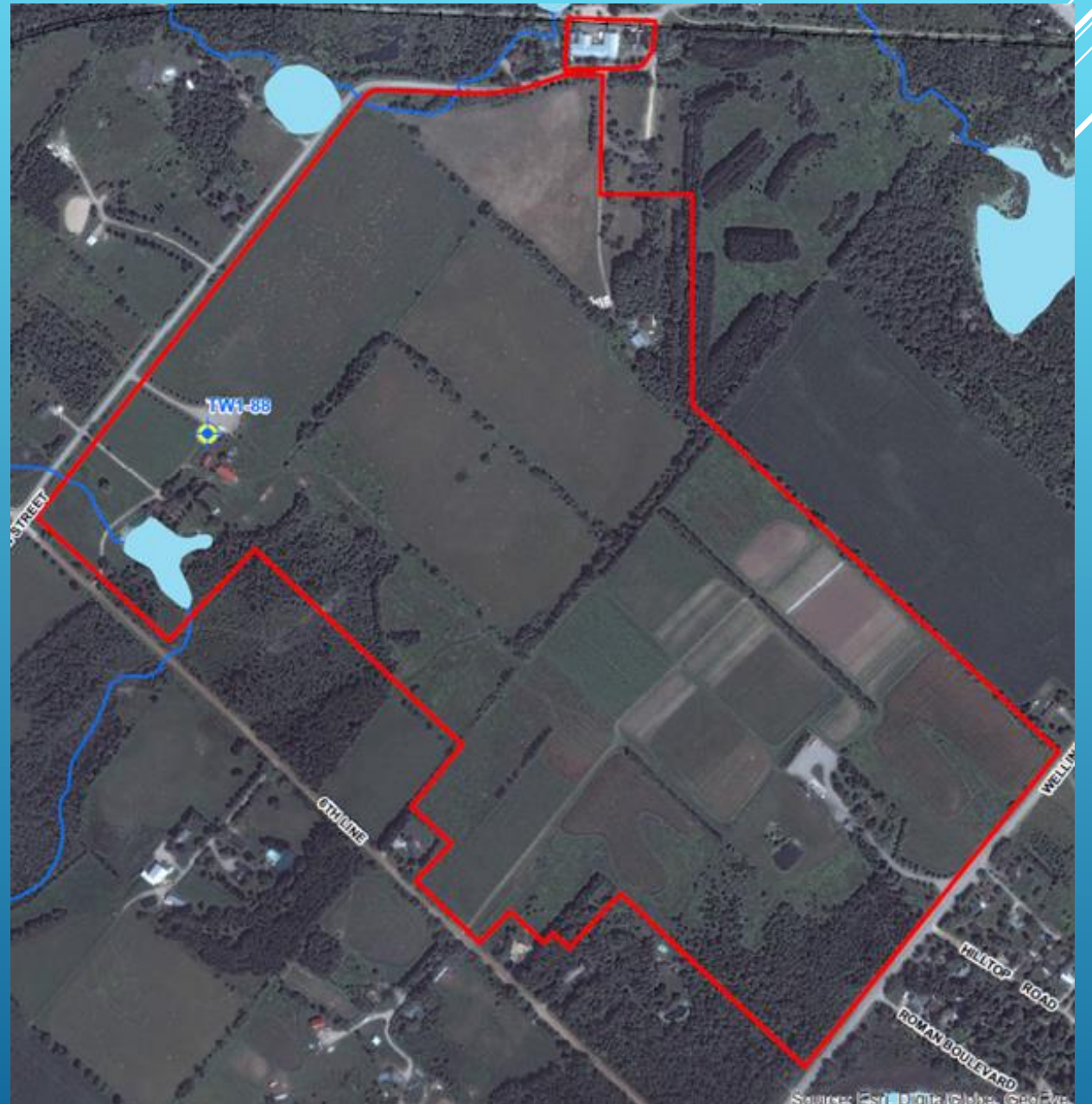


BlueTriton Brands

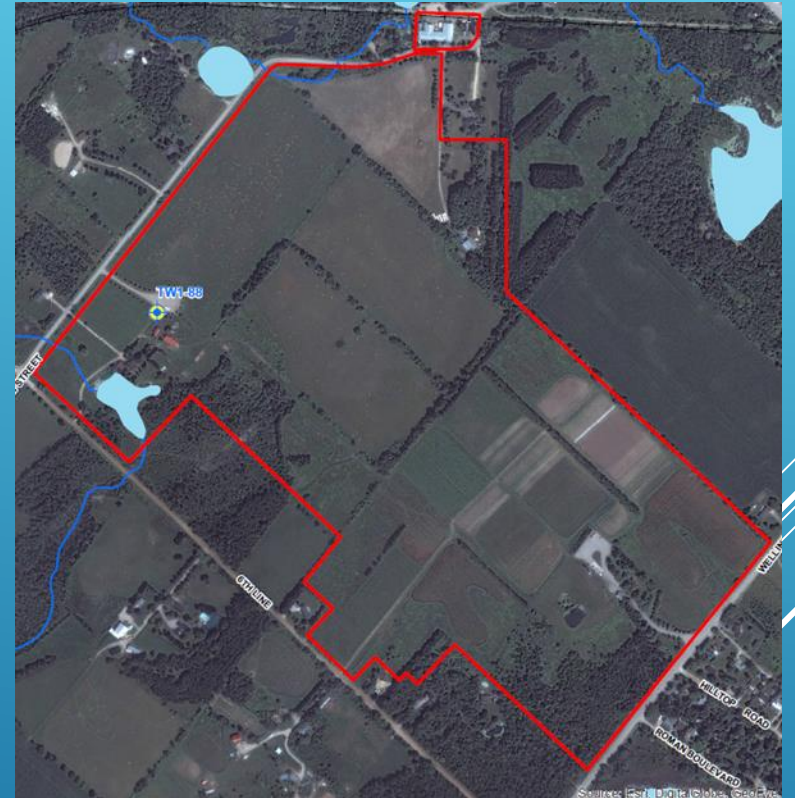
Town of Erin Annual update

September 12, 2024



ERIN HISTORY

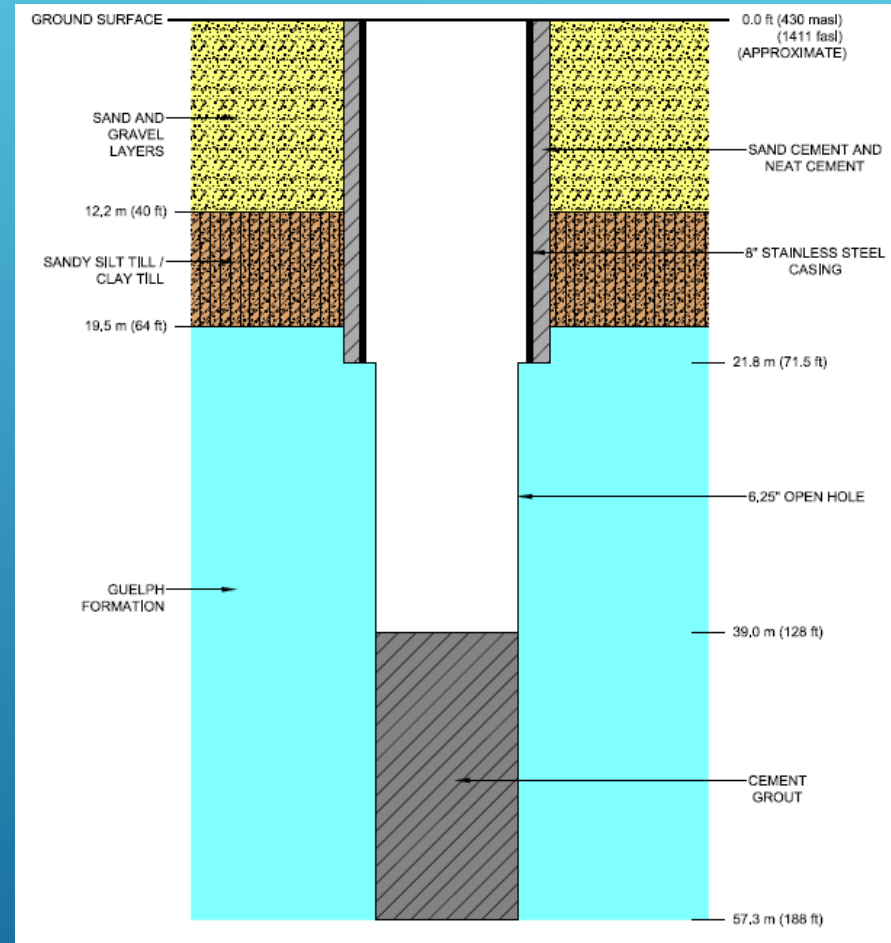
- **TW1-88 is used to supply water for bottling water.**
- **Water is pumped to a silo and then transported to the Aberfoyle Plant for bottling.**
- **TW1-88 was constructed in 1988.**
- **Pumping for commercial purposes began in 2000.**



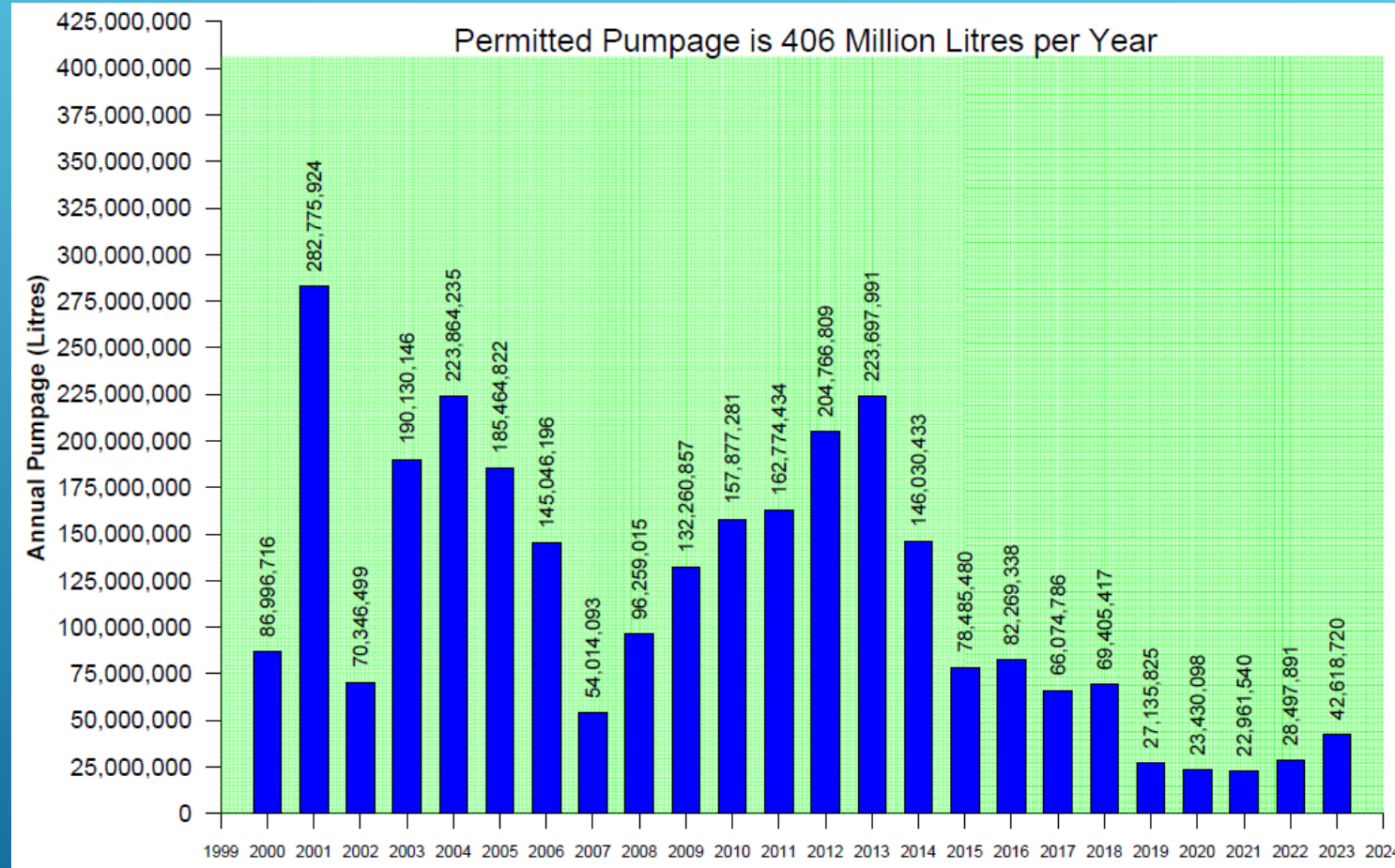
ERIN PERMIT

- **BlueTriton's water taking is governed by PTTW Number 4788-C5TJTZ**
 - **TW1-88 is used for bottling water.**
 - **Total daily taking cannot exceed (1.113 ML/day).**
 - **The new permit was issued on November 15, 2021 and is valid for five years.**

ERIN SUPPLY WELL TW1-88



TW1-88 ANNUAL WATER TAKINGS

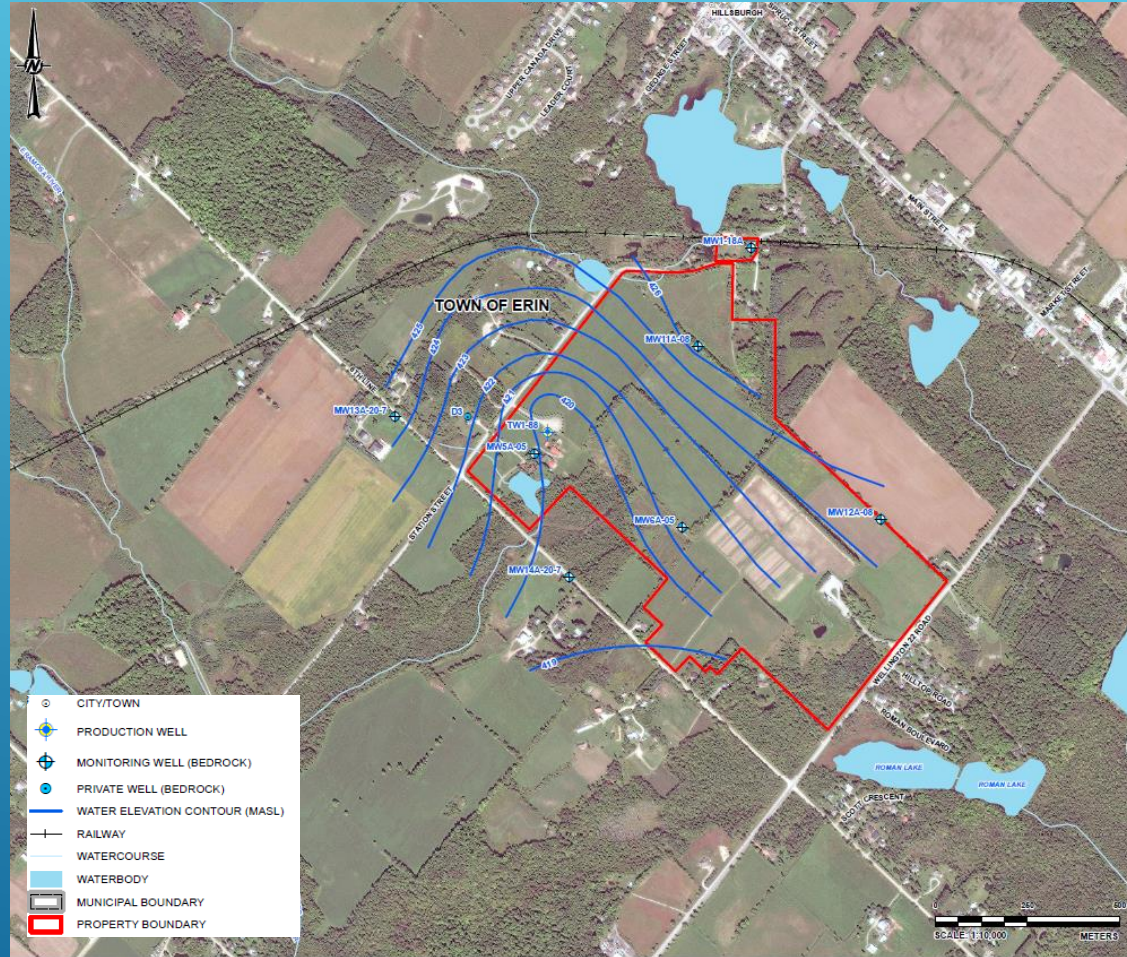


GROUNDWATER AND SURFACE WATER MONITORING PROGRAM

- **1 production well**
- **8 monitoring well nests (total of 16 monitors)**
- **7 surface water stations**
- **7 mini-piezometer nests (total of 14 monitors)**
- **1 private well**

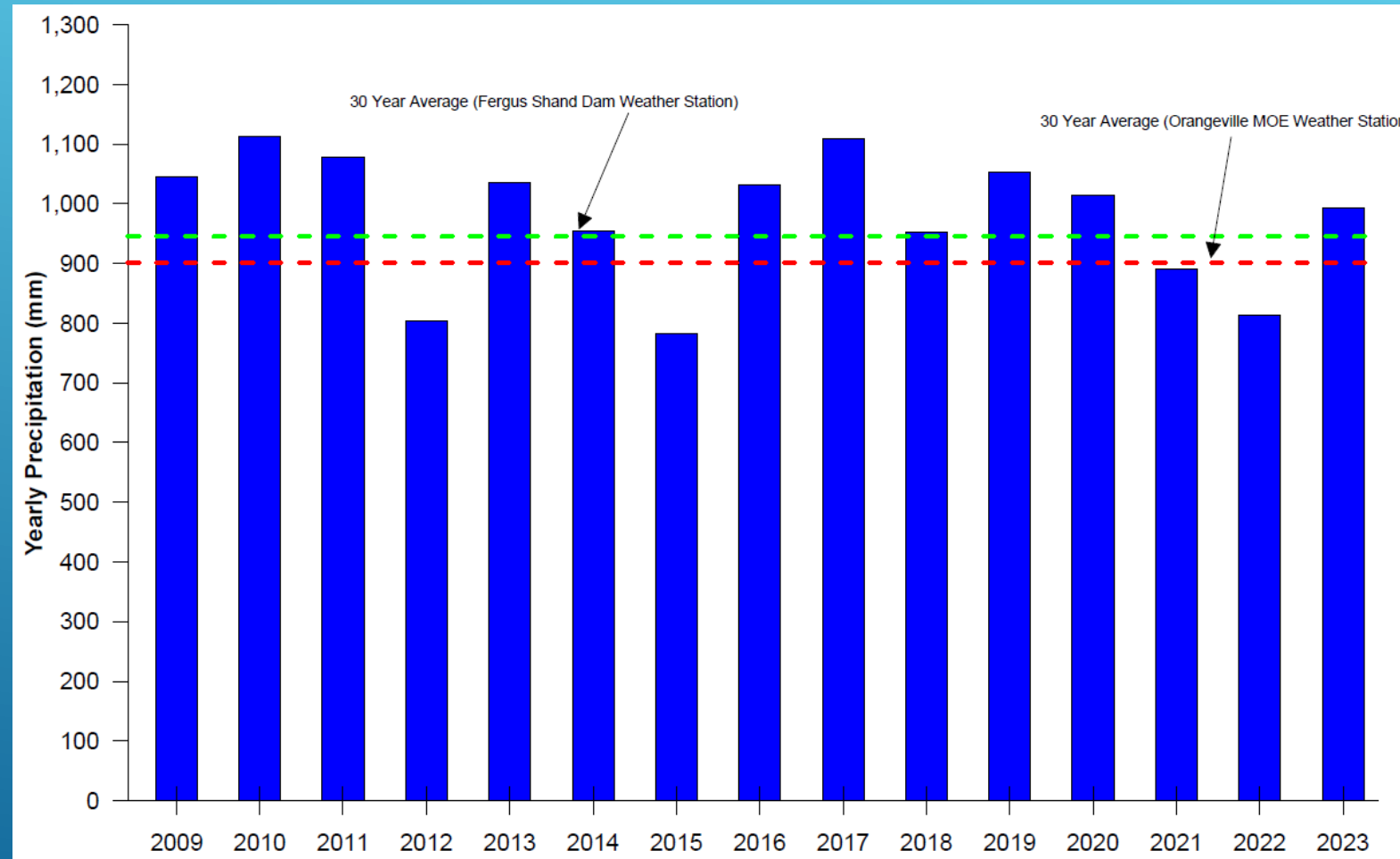


POTENTIOMETRIC SURFACE IN GUELPH FM.

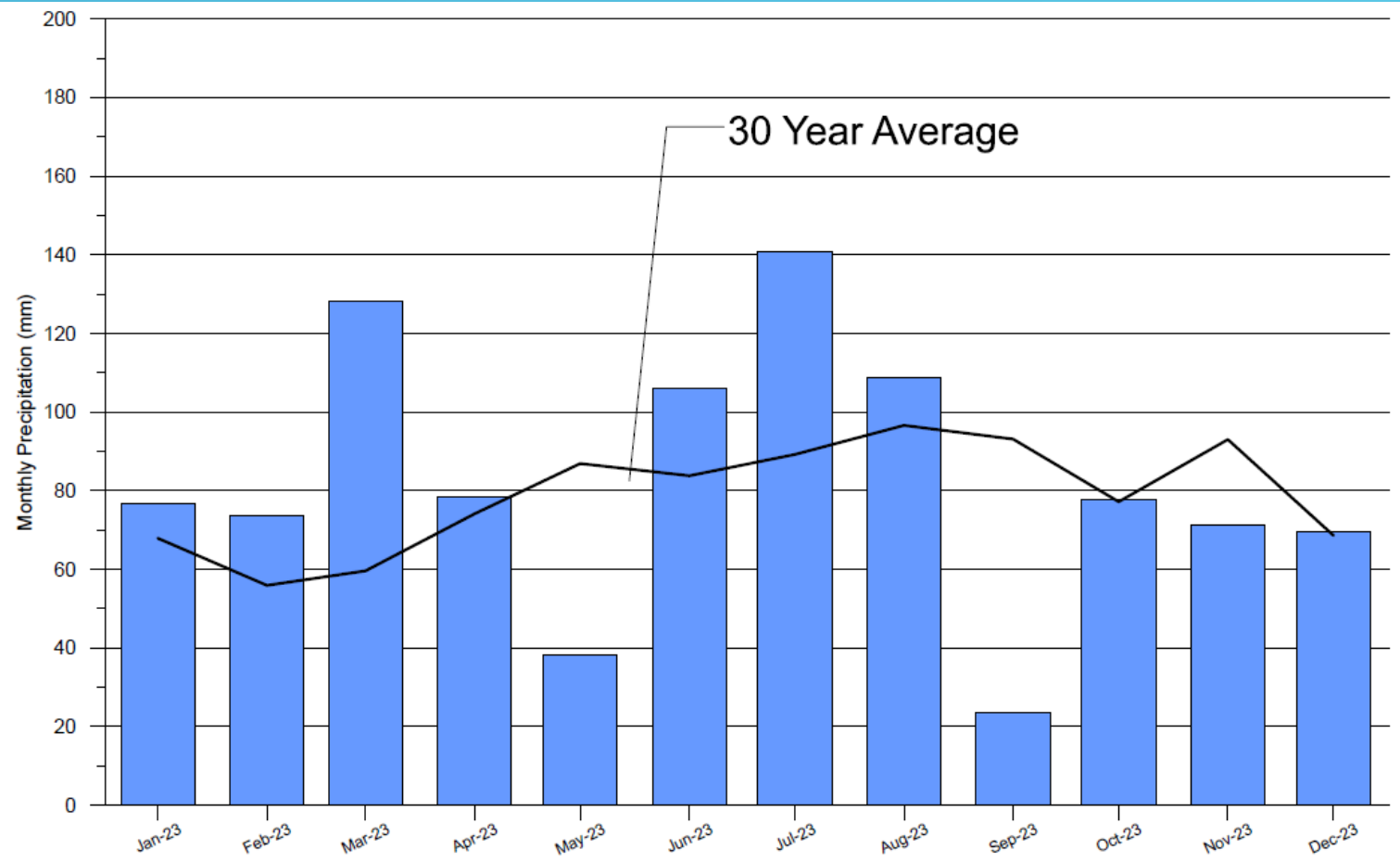


Water levels
measured
September 26,
2023

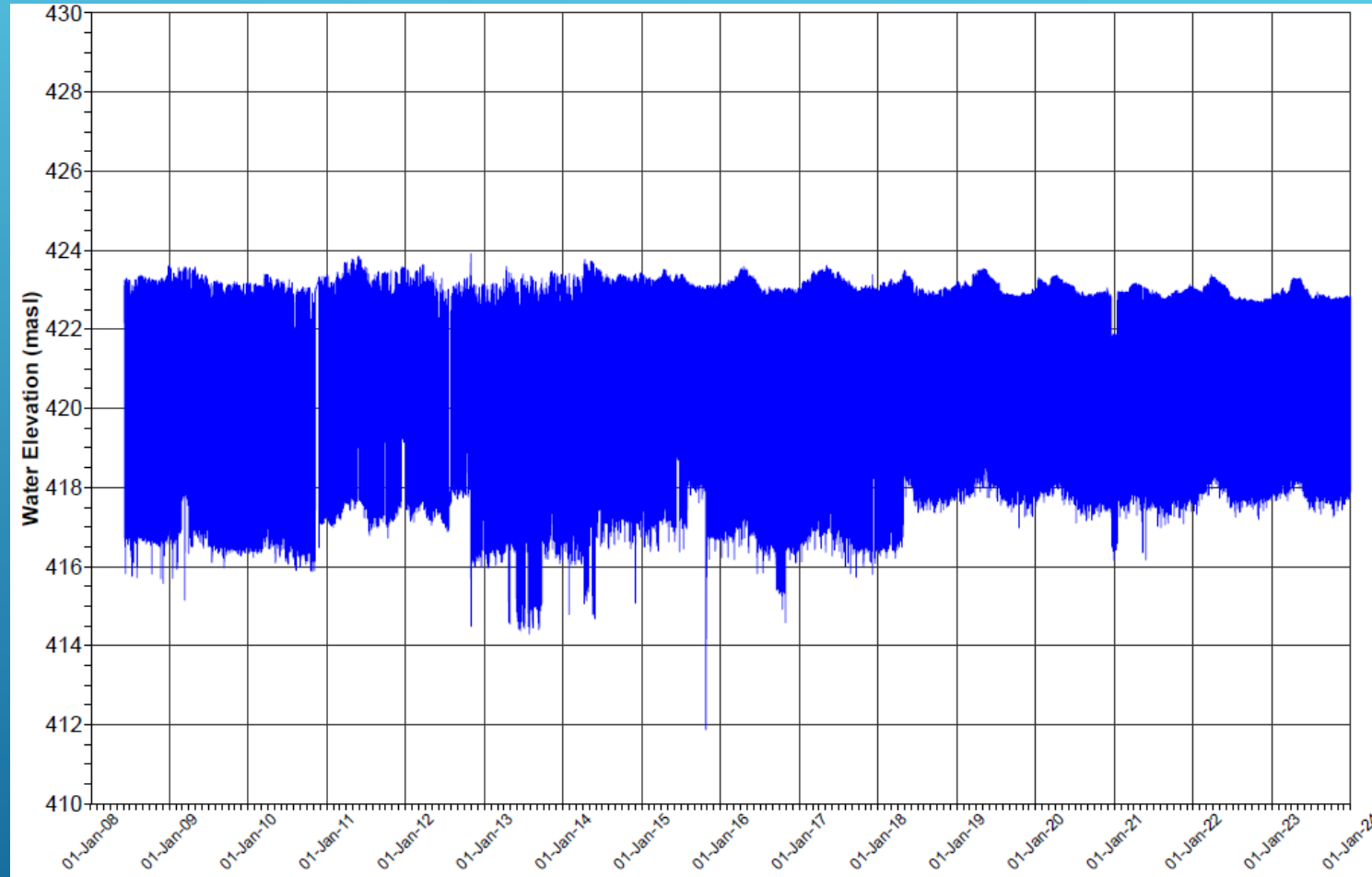
HISTORICAL PRECIPITATION



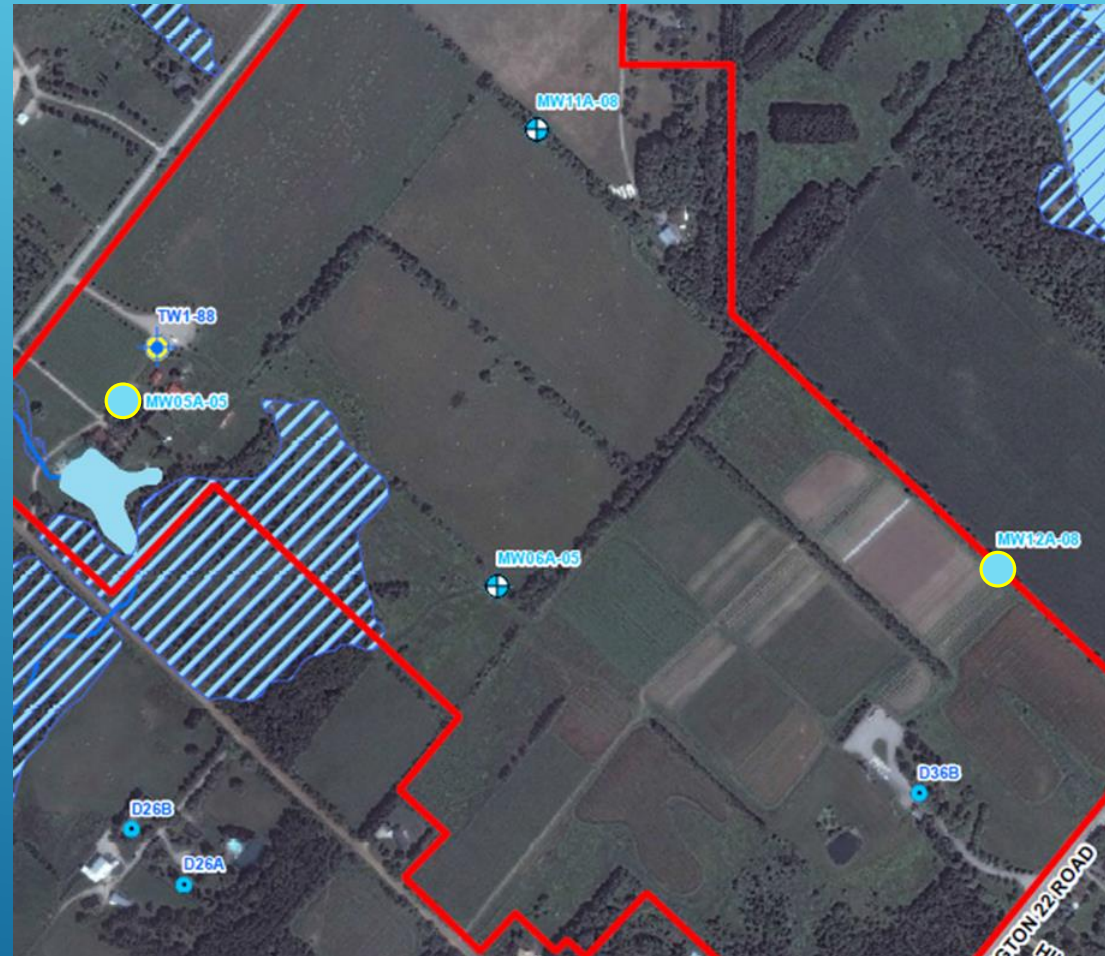
2023 PRECIPITATION



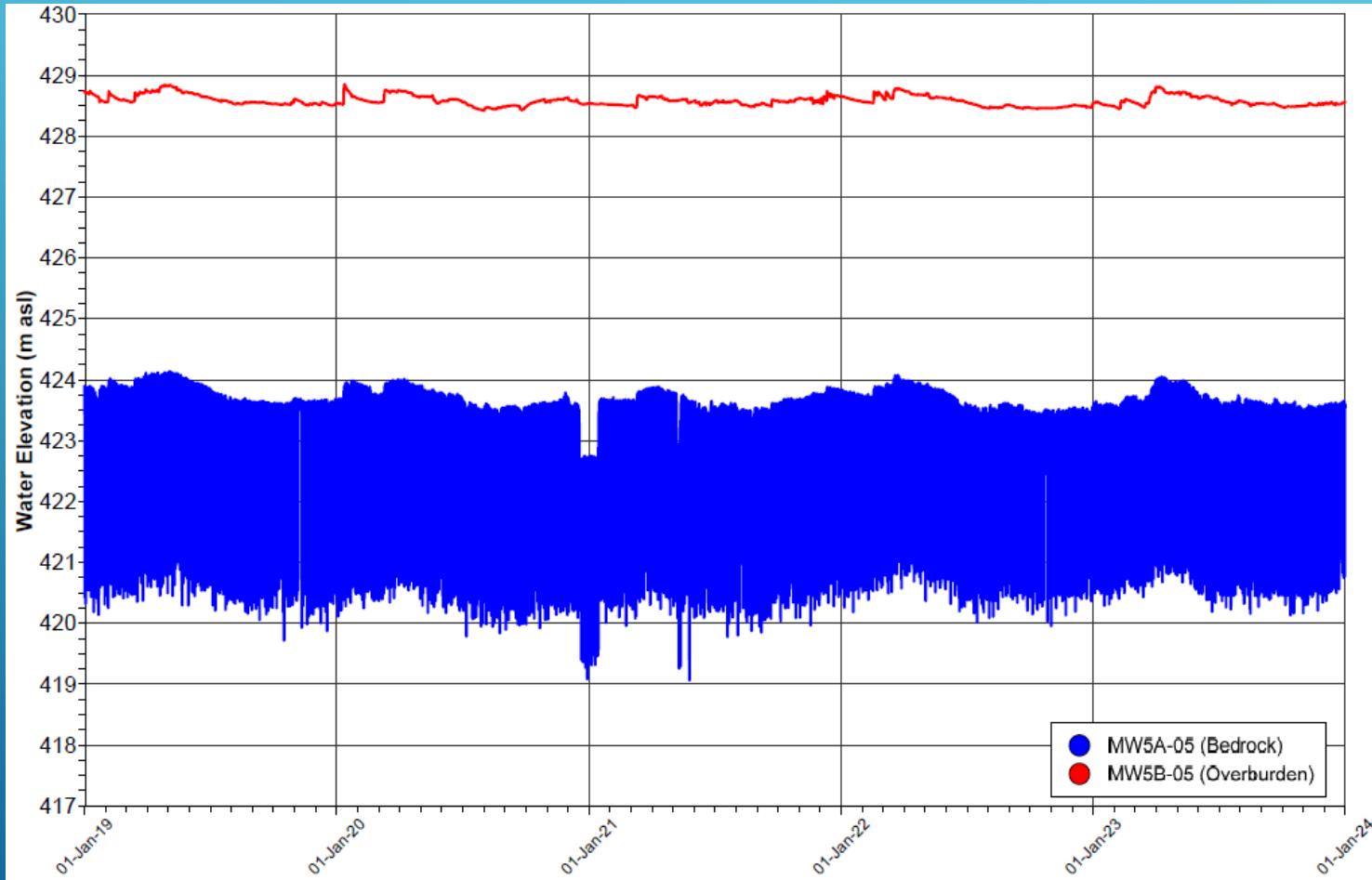
HYDROGRAPH – TW1-88



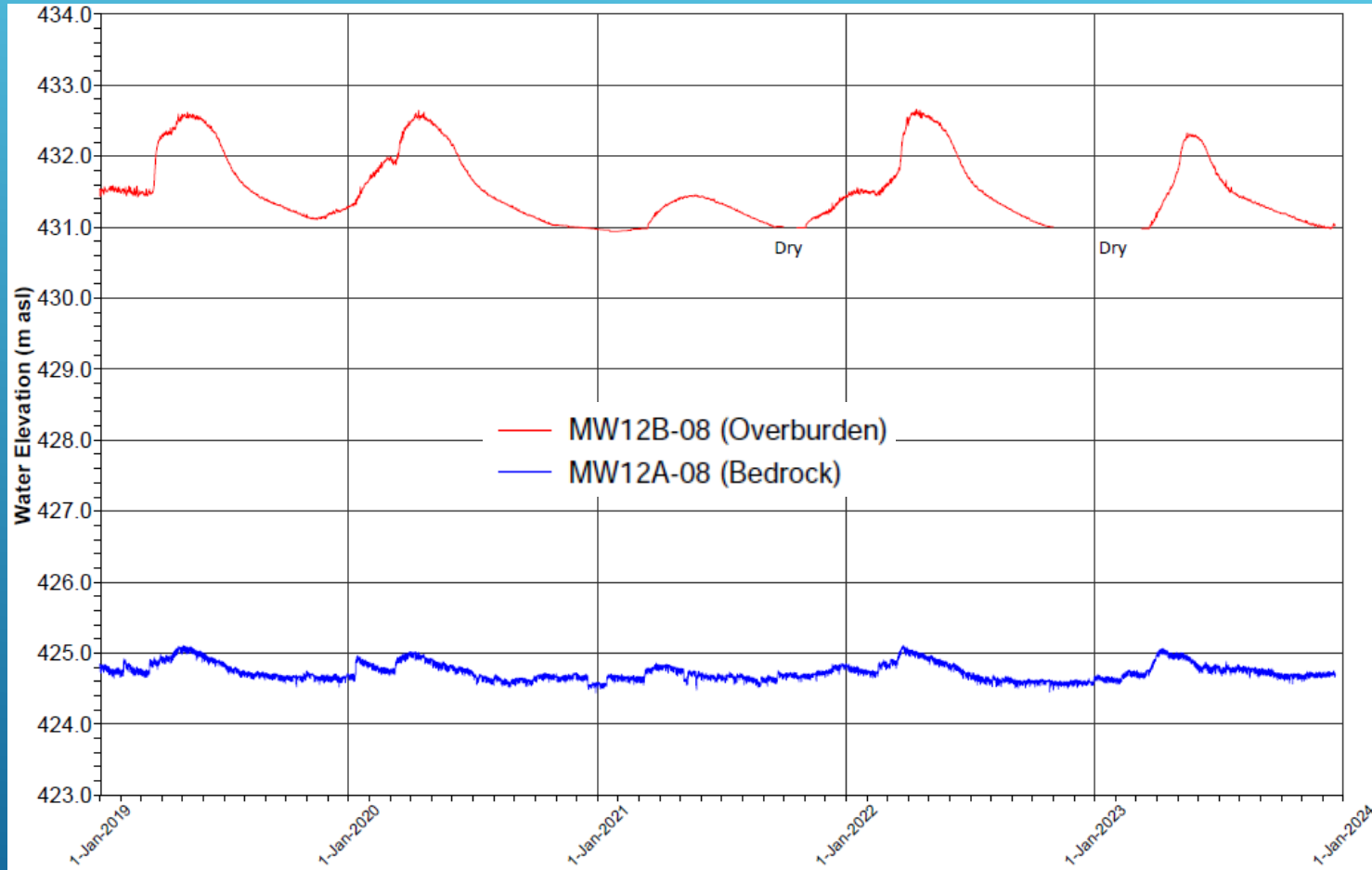
MW5-05 AND MW12-08 LOCATION



HYDROGRAPH – MW5-05



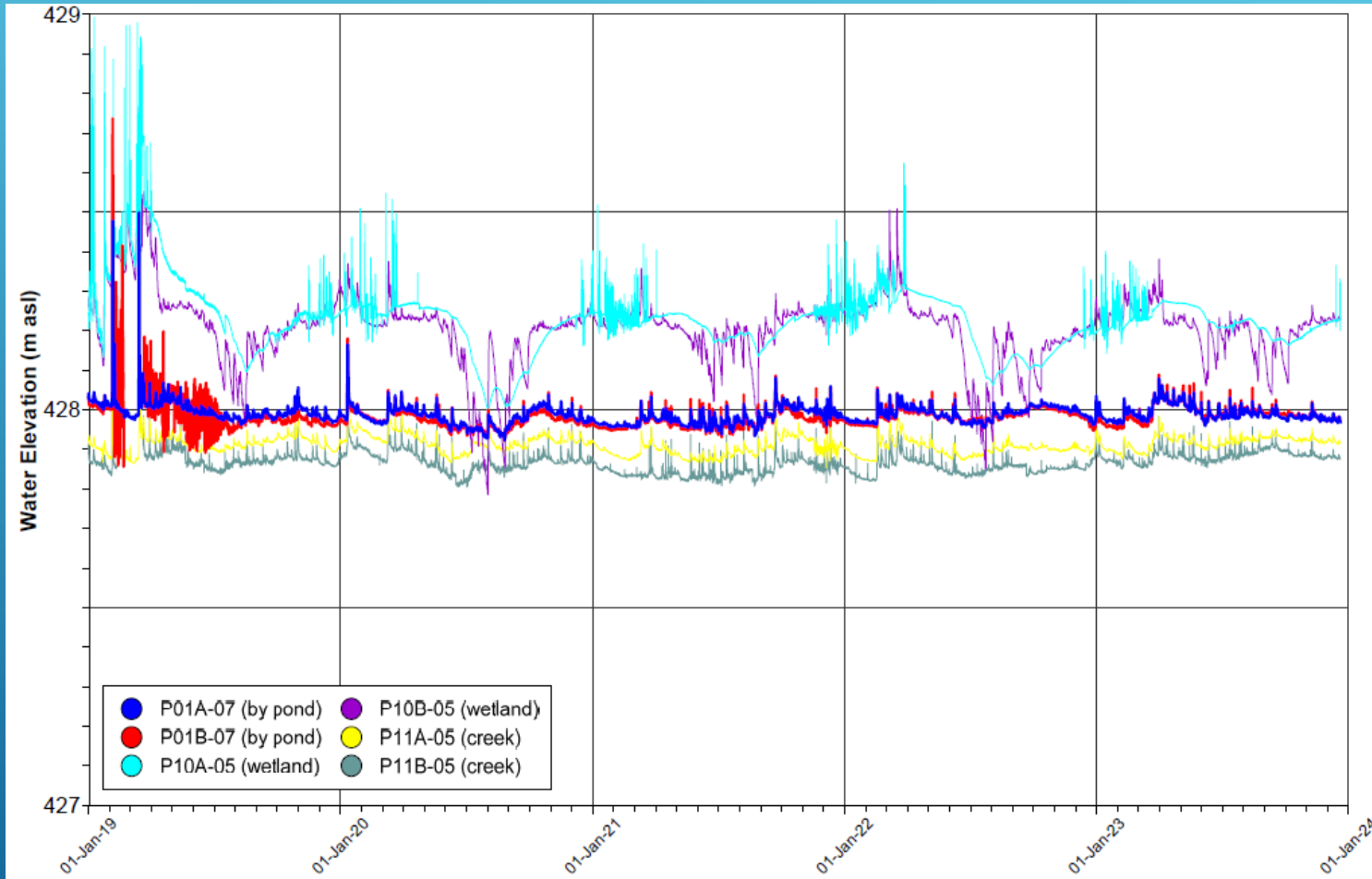
HYDROGRAPH – MW12-08



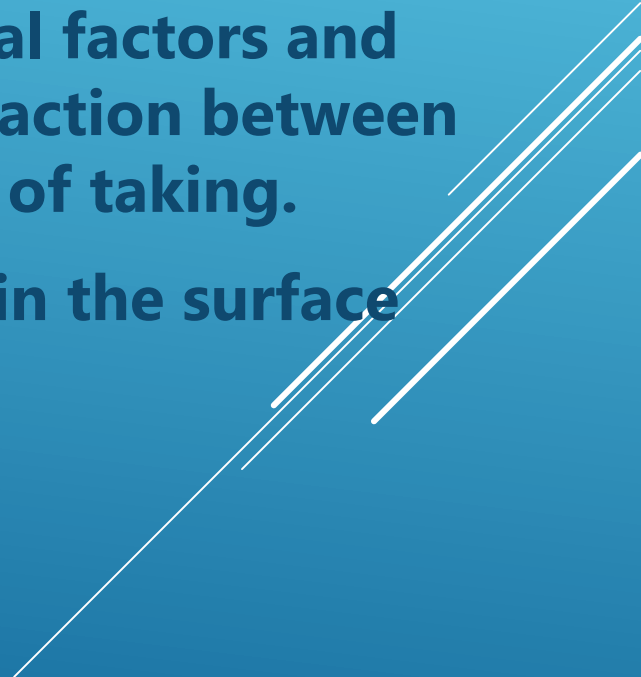
MINI-PIEZOMETER LOCATIONS



HYDROGRAPH – MINI-PIEZOMETERS

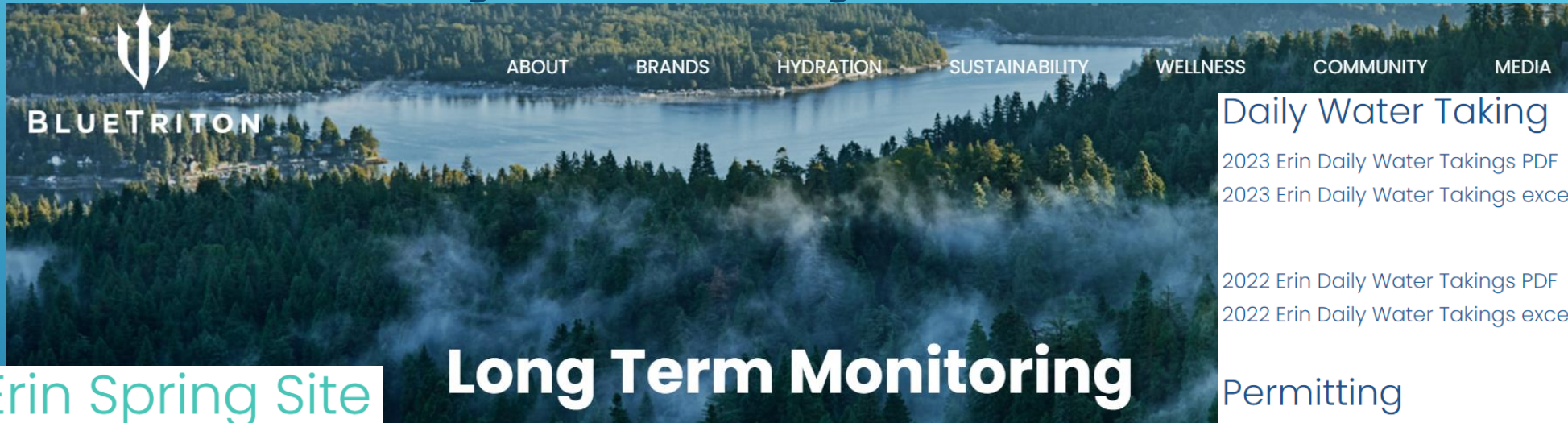


MONITORING SUMMARY

- **The trend of water level variation within the Guelph Formation is stable and the groundwater taking from TW1-88 has not caused a long-term decline in the aquifer water level.**
 - **Water levels in the overburden are influenced by seasonal factors and not by pumping at TW1-88. There is no significant interaction between the bedrock and overburden aquifers at the current rate of taking.**
 - **Pumping at TW1-88 does not influence the water levels in the surface water features.**
- 

QUESTIONS

- www.bluetriton.ca/long-term-monitoring



Erin Spring Site

- 2023 Erin Annual Monitoring Report
- 2022 Erin Annual Monitoring Report
- 2021 Erin Annual Monitoring Report
- 2020 Erin Annual Monitoring Report
- 2019 Erin Annual Monitoring Report
- 2018 Erin Annual Monitoring Report

Daily Water Taking

- 2023 Erin Daily Water Takings PDF
- 2023 Erin Daily Water Takings excel format

- 2022 Erin Daily Water Takings PDF
- 2022 Erin Daily Water Takings excel format

Permitting

- Technical Documents to Support PTTW
- Erin Spring Executive Summary
- Private Well Interference Complaints Resolution Agreement
- Low Water Response Plan for Erin
- Technical Study for Permit to Take Water Renewal Application